



MUIREDGE PRIMARY & NURSERY CLASS

School Handbook 2023/24



Phone: 01698 813 852

Email: gw14muiredgepsoffice@glow.sch.uk

Website: www.muiredge-pri.s-lanark.sch.uk

Twitter: @muiredgeprimary





Contents

1. Introduction
2. About our School
3. School Ethos
4. Staff List
5. Attendance
6. Parental Involvement/Parent Council
7. The Curriculum
8. Assessment and Tracking Progress
9. Reporting
10. Enrolment and Transitions (Change of school / Placing requests)
11. Support for Pupils (Additional Support Needs)
 - Getting it Right for every child
 - Enquire
 - Attachment Strategy
12. School Improvement
13. School Policies and Practical Information
14. General Data Protection Regulation as supplemented by the Data Protection Act 2018 (GDPR)

If you need this information in another language or format, please contact us to discuss how we can best meet your needs. Phone: 0303 123 1023 Email: education@southlanarkshire.gov.uk.

Section 1: Introduction

In Muiredge we work hard to ensure that all children are supported and encouraged to develop the skills and attributes which will allow them to reach their full potential now and in the future. I hope you find this handbook provides valuable information about our school. Partnership with parents/carers is central to achieving our aims and we look forward to working together with you to provide a rich and stimulating education for all our children.

We are extremely fortunate to have a fantastic modern school building. It is certainly a building of which we are very proud and are delighted to work and learn within. It mixes old and new extremely well and is a building that is fit for delivering education in the 21st century.

Muiredge Primary School serves the area of Uddingston, most of our pupils stay in privately owned housing and have good access to local services and transport. There have been lots of new houses built in the local area and many new families choosing to reside in Uddingston and attend Muiredge. Many of our pupils come to the school as placing requests from out with our authority as we sit on the border of North Lanarkshire and Glasgow City Council.

The school was refurbished and extended in 2015. Originally built in 1897, MPS has had a long and distinguished history within the community. The current roll of the school is 349 pupils. The building has 13 classrooms, a nursery, gym hall with a large stage, bistro dining area, Hive Nurture Room for HWB, sensory room, ICT suite, library area, MUGA pitch, climbing frame and a newly refurbished playground clubhouse. We are part of the Uddingston Learning Community.

Pupils, parents and staff worked together to create our school vision and associated values. Our aim is for everyone to ***'Be the Best you Can Bee'***. This vision statement has been fundamental in creating an environment where pupils, staff and the school community strive to improve learning and aim for the best. ***We want our learners to be Kind, Committed, Honest and Ambitious.***

Our teaching is based on the belief that all children can achieve. We set high expectations for our learners and are always looking to improve our approaches to teaching and learning to ensure learner engagement, attainment and achievement are high.



South Lanarkshire Council is the fifth largest authority in Scotland. It covers the following main areas; Clydesdale in the south which features extensive rural areas, Cambuslang, Rutherglen, Blantyre and Uddingston to the north as well as the towns of East Kilbride and Hamilton.

The Council's Plan Connect sets out the Council's vision which is, "to improve the lives and prospects for everyone in South Lanarkshire".

For Education Resources this means delivering services of the highest quality as well as striving to narrow the gap. It is about continually improving the services for everyone at the same time as giving priority to children, young people, families, and communities in most need. The priorities for schools and services are set out in the Education Resources Plan which confirms the commitment to provide better learning opportunities and outcomes for children and young people.

The priorities for all schools in South Lanarkshire are set out on the back page of the handbook.



The impressive stained glass window and Legacy Tree in the foyer

Starting school for the first time or transferring to another school can be a daunting prospect for many children. We will do our best to welcome new pupils and to help them settle quickly into the new routine of the classroom and the school. We hope that your child will find Muiredge a pleasant and stimulating experience.

Our aim is to provide quality learning experiences within a secure, happy and safe environment, which enables each child to fulfil his or her potential to develop as a tolerant, understanding and caring individual and ultimately to be a responsible citizen, who can face the challenges of a modern society with confidence.

Muiresedge values its close links with you. Parents are welcomed into the school to help teachers, the children and the management team whenever possible. We have established a regular body of parent helpers, who play an important part in the smooth running of the school. All parents interested in helping should contact the school office.

Under new legislation, all parent helpers must be checked under Disclosure Scotland, for security purposes. A PVG proforma requires to be completed. This can be obtained at the school office.

Communication between home and school receives a high priority in Muiresedge. This will take the form of:

- Parents Portal (web version or app)
- Termly newsletter
- Formal and informal invitations to the school
- Information letters (via email, App or hard copy)
- Our school website – please check it out www.muiredge-pri.s-lanark.sch.uk
- X (formerly Twitter) - @muiredgeprimary – X feed can be found in the News Section on the school app

You are of course free to make an appointment to see the Head teacher/Depute Head Teachers to discuss any matters should you feel it is necessary.

We look forward to celebrating the many successes your child will achieve in Muiresedge and within the community. Our links with the community and our neighbouring schools are well established. We aim to maintain and strengthen these links with your help.

Thank you for taking time to read our handbook. We hope that you find this handbook interesting and informative.

Mrs Leigh Miller

Head Teacher





Section 2: About our school

Muiredge Primary School
Watson Street
Uddingston
Glasgow
G71 7JL
Phone: 01698 813852

Email : gw14muiredgepsoffice@glow.sch.uk

School Website: www.muiredge-pri.s-lanark.sch.uk

Twitter - @muiredgeprimary

Denominational Status

The school is a non-denominational primary school with a current roll of 349 children between the ages of 5 and 12.

School Hours

Start	9.00am
Interval	10.40am – 10.55am
Lunch	12.35 – 1.20pm
End	3.00pm
Breakfast Club	8.15 – 8.45am (every day)

Breakfast club is free and spaces can be booked via the school office.

We have no after school care provision within our establishment.



Early Years Education: Muiredge Nursery Class

The school has a nursery which provides broad, balanced and stimulating learning opportunities for young children.

Pre-school education is an important stage in any child's education and helps children to learn as they play. It enriches and extends the valuable learning that goes on in and around the home. It helps to prepare children for primary school and helps to develop the learning skills we all need in later life.

To find out more about the nursery please contact the school. Please note that if you register your child for our nursery, this does not mean that you will automatically be enrolled at this school when your child is ready to start primary school. All children who move from early years to primary education must register separately for school in the month of January.

Enrolment

Please contact the school office if you wish to apply for Muiredge Nursery place for your child. Closing date for August nursery intake is the last day of February.

Staff

The staff of Muiredge work together as a team, providing the range of skills and experience we need to support the wide curriculum offered by the school. For your information and guidance, we have indicated below some of the duties of the teachers and support staff you will meet as your child progresses through the school.

The Senior Leadership Team in the school are responsible for administration, learning support, pastoral care, extra- curricular activities and the welfare of both staff and pupils and the in-service training of staff.

As Acting Head Teacher, Mrs Lee has overall responsibility for pastoral care and welfare of all pupils. Mrs Lee is responsible for Nursery-P1, Mr McCann is responsible for P2-P4 and Miss Ashwood is responsible for P5-7 pastoral care and welfare. The Senior Leadership Team has the Health and Safety remit for the school.

Information to proposed transfer of school

Children and young people may transfer school for a number of reasons such as families moving house, parental choice etc.

If you are proposing a change of school for your child, please provide as many contact details as possible in relation to the new school, so that we can ensure a smooth transfer of information relating to your child.

This will help us all to ensure the continued wellbeing of your child.

If you wish to arrange a visit to the school because you are seeking a place for your child, please first contact the school office to make an appointment.

If you move out-with the catchment of Muiredge Primary, please advise the school office as your child's contact details must be updated and a "request to remain" form completed.

Parental Concerns

In Muiredge Primary, we have an open-door policy and hope that our strong relationships with parents/carers ensure there are little concerns. However, if you do have any concerns then you can email or call via the school office to request to speak with your child's class teacher. Parents are encouraged to share any concerns that arise, early, so that problems or issues can be resolved as quickly as possible. Please note, class teachers should not be emailed directly and all communication should go via the school office email.

Complaints Procedure

If unfortunately, we are unable to answer/resolve your concerns then the complaints procedure is here to help you. You can make a complaint by telephone to the Head Teacher of office staff if the Head Teacher is unavailable or by email to gw14muiredgepsoffice@glow.sch.uk

Schools and establishments should be the first point of contact for parents who wish to discuss issues about their child. Other contacts you may find helpful are:

South Lanarkshire Council
Executive Director of Education
Education Resources
Council Offices, Almada Street,
Hamilton ML3 0AE

Education Resources Helpline
0303 123 1023



Section 3: School Ethos



Our shared vision for 2023/2024 is -

“For all of our learners, families, staff and wider community to be the best they can be, whilst improving reading, closing the poverty related attainment gap and providing rich and engaging interdisciplinary learning through effective pedagogical approaches. Ensuring our learners are kind, committed, honest and ambitious in everything they do, learn and achieve.”

Our school motto at Muiredge Primary and Nursery is to ‘Be the Best You Can Bee’ and we uphold the values of “Kind” “Committed” “Honest” and “Ambitious”

Kind – In Muiredge Primary we expect everyone to demonstrate kindness towards themselves and others through our daily interactions in what we say and do, true kindness is what should always shine through

Committed - We show strong commitment to our learning and our school. Through hard work, determination and resilience we strive to achieve our goals with the help and support of our school community.



Honest – In our relationships with others we are always open, honest and trustworthy. We have authentic communication that allows us to truly reflect on ourselves and our school. This allows us to grow.

Ambitious – In Muiredge, we strive to ‘Be the Best we can Bee’. As a community of learners we set our ambitions high, work together as a team and show commitment to achieving success.



In Muiredge we aim to **promote positive relationships**. We have three simple school expectations for everyone to follow:

- Ready to Learn
- Respectful to everyone
- Safe always

Staff collectively worked together to form our Muiredge 'Behaviour Blueprint' which sets the routines, expectations and procedures for promoting positive relationships.

We are committed to building promoting strong relationships through:

- Visible adult consistencies
- Relentless Routines
- Recognition of effort and Behaviour (all classes have a pupil recognition board)
- Behaviour Intervention Strategies
- Restorative Conversations

All Staff strive and aim to provide quality-learning experiences within a secure, happy and safe environment, which enables each child to fulfil his or her potential to develop as a tolerant, understanding and caring individual and ultimately to be a responsible citizen, who can face the challenges of a modern society with confidence.

All children learn at a different pace and have individual needs. Consequently, it is our aim that every child is provided with a variety of learning experiences and has access to a full and challenging curriculum, regardless of sex, race, religion, culture or ability.

It is our aim to encourage all of our pupils to have respect and consideration for other people holding different views and having different cultures to their own.

We show a commitment to counteracting prejudice and injustice whatever form it may take and it is the responsibility of the Senior Leadership Team to investigate and take action on any alleged incident.

How we deliver the curriculum as well as what we deliver has an impact on pupil progress and attainment. We endeavour to use a variety of approaches to suit a range of learning styles, supporting and challenging pupils where appropriate. Children work individually and collaboratively, sharing ideas and helping each other to progress. Through a formative assessment approach, pupils are more aware of what to improve and how to improve their work.

[illegible]

In our school, we expect the children to act sensibly, show respect for each other as well as for their teachers and other members of staff. We want them to look after the school premises by keeping them tidy, making our school a place of which they are proud.

Promoting positive behaviour is seen as of vital importance. Staff, work as a team to achieve high standards of work and behaviour through promoting positive attitudes in our pupils. Many effective strategies have been developed and are used in class.



At Muiredge, we aim to form a close relationship with parents so that they are kept informed of any issues that may develop in the school which affect their child.

As part of 'taking responsibility', we have a Buzz Group, Lunch Clubs and Mediators which are run by the pupils for the pupils. In cases of a dispute between pupils, a trained pupil mediator helps the parties involved in the dispute to agree what has happened, what harm has been done and what can be done to put things right. The Senior Leadership Team are always on hand in the event support is needed.

It is the responsibility of senior staff within the school to ensure that staff, parent council members, parents and pupils are involved in the creation of a positive school ethos that encourages good behaviour.

Equally, the school whilst trying to promote positive behaviour must support young people, should incidents or bullying occur. Parents have a significant role to play in working with the school so that teachers, parents and pupils know what is expected of them in trying to change the behaviour and attitudes that contribute to bullying behaviour.

Our approach is to create an environment where better behaviour will encourage better learning. The school, along with the support of parents, can work together to create a learning environment which young people can enjoy and feel safe.

The School in the Community

We welcome the help and expertise of parents on school outings and with various other activities. Many parents help on a regular basis throughout the year as part of a rota of helpers. If you feel you can offer support in school we would be pleased to hear from you. Parent/community helpers are now required to complete a PVG check before being able to help in school on a regular basis. This is part of a nationwide procedure designed to safeguard our children.

The school has close links with the community. There are many opportunities for the children in school to take part in activities and events as members of the local community.

The school has links with the local churches. The school chaplain is Rev. Fiona McKibbin of Uddingston Old Parish, who links in to support us with our RME programme of study and takes services both in school and at the end of term in Uddingston Old Parish. School services at Christmas, Easter and summer are open to all members of the community. We also have links with Park Church through our RME curriculum as well as the Scripture Union Club that is held weekly throughout the school year.

MUIREDGE PRIMARY & NURSERY CLASS

During various social studies projects and Interdisciplinary learning, the children look at aspects of the village and village life. We often make use of local expertise with invited speakers from the community.

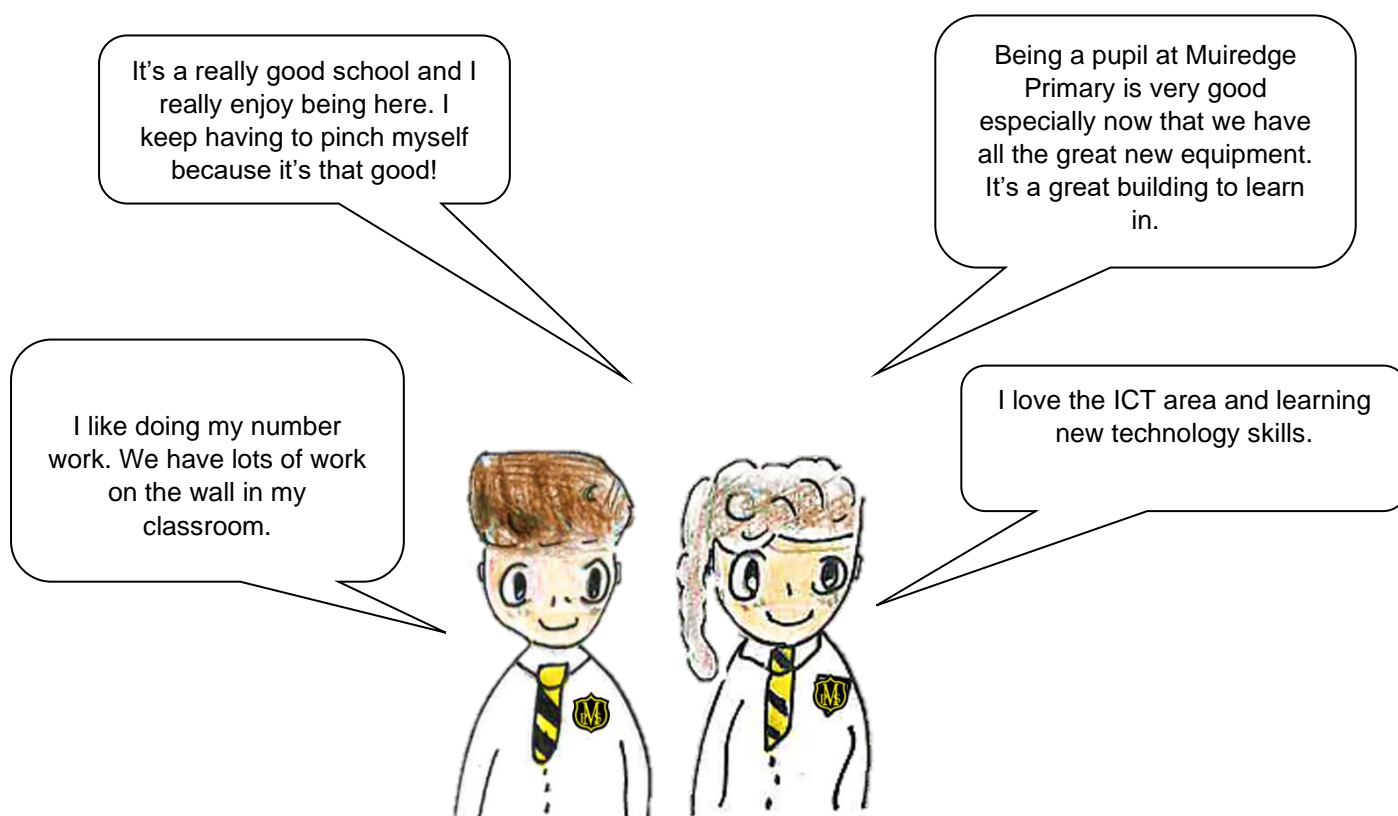
A range of extra-curricular activities are offered to pupils from P1-P7 over the course of the year. Sports coaches from the community's local clubs bring their expertise to teach a range of games within the PE curriculum.

We have close links with many local businesses, groups and individuals within the community, School Health Service and Community Police Service.

We are involved in liaison with local Pre-5 Centres and Secondary school, and maintain useful links with other Primary schools in the area.

Pupils visit the local library and we advertise all the activities organised locally for young people.

We like to encourage our pupils to take pride in their community and to contribute in any way possible. We welcome community members who are willing to share their particular expertise with our children. This is a valuable community resource and it helps build mutual respect between our children and other adults in the community.





Section 4: Staff List

School Staff**Senior Leadership Team**

Mrs Lisa Lee	Head Teacher (Acting)
Miss Claire Ashwood	Depute Head Teacher
Mr Martin McCann	Depute Head Teacher (Acting)
Mrs Yvonne McKegney	Teacher/Principal Teacher

Teaching Staff

Mrs Claire Urquhart	P1 Teacher
Miss Louisa McEwan	P1 Teacher
Mrs Elaine Beattie	P2 Teacher
Miss Maisie Duffy	P1/2 Teacher
Mrs Alison Simpson	P3 Teacher
Mrs Christine Gray/Miss Rooney	P2/3 Teachers
Mrs Pamela McVey	P4 Teacher
Mrs Christina McKechnie	P4 Teacher
Mrs Wendy Main	P5 Teacher
Mr Stuart McIntosh/Miss Aimee Clark	P5/6 Teachers
Mr Paul Rafferty	P6 Teacher
Mrs Jo Nicholson/Mr Jake Wilson	P6/7 Teachers
Mr Jamie MacDonald	P7 Teacher
Mr Stuart McIntosh	CCC Cover
Ms Bernie Maguire	CCC Cover & Interventions

Nursery Staff

Mrs Linda Barr	Team Leader
Miss Ashley Russell	Early Years Worker



MUIREDGE PRIMARY & NURSERY CLASS

Miss Lesley Strain	Early Years Worker
Mrs Margaret Beattie	Early Years Worker
Mrs Nikki Gilchrist/Miss Emma Oliver	Early Years Worker
Miss Kerri Nelson/Mrs Irene Simpson	Early Years Worker
Miss Michelle Ferguson/Mrs Laura McCallum	Early Years Worker

School Support Staff

Ms Brogan Dick	Office
Mrs Kate McMorran	Support Assistant
Mrs Laura Dunlop	Support Assistant
Mrs Susannah Dunnery	Support Assistant
Mrs Julie O'Shea	Support Assistant
Mrs Shona Young	Support Assistant
Mrs Anagha Dixit	Support Assistant
Miss Leah Sanderson	Support Assistant

Extended Team

Alison Hepburn (peripatetic 01698 477350)	Specialist Support Teacher
Mr Kelton Green	Educational Psychologist
Mrs Margaret Kelly (01698 366035)	School Nurse
Rev F McKibbin (01698 814757)	School Chaplain
Mrs K Reilly	Active Schools Co-ordinator
Mr Gary McBretney	Double Bass / Cello Tutor
Ms Shona Robertson	Violin Tutor
Mr Stuart Pollock	Brass Tutor

Community Resource Team

Mr Neil Dickson	Janitor
Mrs Tracy Farquhar	Cleaning Supervisor
Mr Myra Jamieson	Cook in Charge



MUIREDGE PRIMARY & NURSERY CLASS

Mrs Sarah Hayes	Catering & Cleaning Assistant
Ms Fiona McMillan	Catering & Cleaning Assistant
Mrs Alison Dickson	Catering & Cleaning Assistant
Mrs Anne McCluskey	Catering Assistant
Mrs Vicky Armstrong	Cleaning Assistant
Mrs Debra Cummings	Cleaning Assistant

Section 5: Attendance

Every effort should be made to ensure that your child attends school during term time. Please contact the school as soon as possible if your child is unable to attend school. It is important for the school to work with parents/carers in encouraging children to attend school. All absences are required by law to be recorded. Absences will normally fall under two categories – authorised or unauthorised absence. In cases where your child is unable to attend school parents are asked to:

If you know in advance of any reason why your child is likely to be absent from school, let us know by email on gw14muiredgeoffice@glow.sch.uk

Notify the school first thing in the morning when your child is going to be absent and each morning thereafter till their return. Let the school know the likely date of return and keep them informed if the date changes.

Inform the school of any change to the following:-

- home telephone number
- mobile number
- emergency contact details
- email details

Requests for your child to be absent from school to make an extended visit to relatives either in the UK or overseas must be made in writing to the head teacher, detailing the reason, destination and duration of absence and arrangements for their continuing education. On these occasions the pupil will be marked as an unauthorised absence.

Parents may request that their children be permitted to be absent in order to celebrate recognised religious events. Advance notice should be provided to the school when children will be absent. Appropriate requests will be granted, and the pupil noted as an authorised absentee in the register. (See section 7).

Information on emergencies

We make every effort to ensure the school remains open during term-time for pupils. However, on occasions circumstances may arise which can affect the school. Schools may be affected by, for example, severe weather, power failures or through any other circumstances that may impact on the school day. In such cases we shall do all we can to let you know as soon as possible. We shall keep in touch by the most appropriate method at the time normally through Parents Portal.

In cases of severe weather in the morning such as snow and a heavy frost and if there is a reason the school cannot open in the morning at the normal time, we will adopt the protocol for a delayed start until 10am.

If this is the case a message via social media and on the council's website will be posted.

The Council's website www.southlanarkshire.gov.uk will be used to let you know if the school is closed or has a delayed start. Further information will be provided later in the day as to whether the school will be open as normal the next day.

Things we need you to do:

- It is important for parents/carers to let the school know of any change to your mobile/home telephone number and change of address.
- If for any reason, you are unsure if the school is open visit the website www.southlanarkshire.gov.uk or email education@southlanarkshire.gov.uk

Your commitments:

We ask that you:

- support and encourage your child's learning – ask them what they have been doing.
- respect and adhere to the school's policies and guidance.
- accept your responsibility to respect staff who work in the school and for the school to be proactive in taking forward its commitment to care for and educate your child.

Family holidays during term time

Every effort should be made to ensure that your child attends school during term time. Please contact the school as soon as possible if your child is unable to attend school.

Family holidays should be avoided during term time as this both disrupts the child's education and reduces learning time. If holidays are taken during times when the school is open parents should inform the school in advance by letter.

If your child is taken on a family holiday during term time, then in line with Scottish Government advice this will be classified as an unauthorised absence. However, in exceptional circumstances schools may register a family holiday during term time as an authorised absence when for example, parents are able to demonstrate they have been unable to obtain leave during the school holiday period.

Clearly, absence with no explanation from parents will mean that the absence will be recorded as unauthorised.

In our approach to raising attainment and achievement it is recognised that attendance at school is something that should be continuously encouraged. Parents/carers, children and



the school all have a part to play in encouraging and stressing the importance of attendance at school.

The school holiday dates, and in-service dates are available from the website

www.southlanarkshire.gov.uk

Section 6: Parental Involvement/Parent Council

South Lanarkshire Council recognises the importance of parents as partners in the education of their child and has published a strategy entitled, 'Making a difference – working together to support children's learning'. This is available from the Council's website: www.southlanarkshire.gov.uk/downloads/file/13457/parents_as_partners_-_strategy_2019

Parents, carers and family members are by far the most important influences on children's lives. Children between the ages of 5 and 16 spend only 15% of their time in school. Research shows that when parents are involved in their child's learning, children do better at school and throughout life. Parental involvement can take different forms, but we hope you share the same aims and agree that by working together we can be partners in supporting children's learning.

As parents/carers we want you to be:

- Welcomed and given an opportunity to be involved in the life of the school
- Fully informed about your child's learning
- Encouraged to make an active contribution to your child's learning
- Able to support learning at home
- Encouraged to express your views and be involved in forums and discussions on education related issues

To find out more on how to be a parent helper, or a member of the Parent Council, please contact the school office.

Parentzone Scotland is a unique website for parents and carers in Scotland, from early years to beyond school. The website provides up-to-date information about learning in Scotland, and practical advice and ideas to support children's learning at home in literacy, numeracy, health and wellbeing and science. Information is also available on Parentzone Scotland regarding additional support needs, how parents can get involved in their child's school and education.

Parentzone Scotland also has details about schools, including performance data for school leavers from S4-S6 and links to the national, local authority and school level data on the achievement of Curriculum for Excellence levels.

Muiredge Primary Parent Council

Our Parent Council meets regularly and makes a valuable contribution to the life and ethos of Muiredge Primary. They support the work of the school. We seek their views on a wide range of issues and benefit from their perspective as parents. The school and Parent Council enjoy very positive relationships and work well together for the good of our school community.

Parent Council Members

Chairperson	Julie West
Vice Chair	
Secretary	Jacquelyn Tees
Treasurer	Gillian Ralston
Parent Representatives school	Representation of parents from across the

(Contact can be made through the school office)



Section 7: The Curriculum

Curriculum for Excellence is the name given to the curriculum in Scotland for all children and young people aged 3-18. It is forward looking, coherent, flexible and an enriched curriculum that provides young people with opportunities to engage with the knowledge, skills and attributes they will need to flourish in life, learning and work.

The curriculum places learners at the heart of education and at its centre are four fundamental capacities - successful learners, confident individuals, responsible citizens, and effective contributors. It includes all of the experiences that are planned for children and young people to support the development of their skills, wherever they are being educated, for example in the family and community, pre-school centre, nursery, and school.

In taking this forward our school will work closely with South Lanarkshire Education Resources and other services to enrich the curriculum, to provide the best possible education for all children and young people. We wish you to feel confident that your child is encouraged and supported to develop their literacy, numeracy and other skills whilst they attend our school. The curricular areas are as follows:

- Expressive arts
- Languages and literacy
- Health and wellbeing
- Mathematics and numeracy
- Religious and moral education
- Science
- Social studies
- Technologies



If you want to know more about Curriculum for Excellence, please visit [Scotland's Curriculum for Excellence \(scotlandscurriculum.scot\)](https://scotlandscurriculum.scot)

Our learning and teaching activities are based on the outcomes and experiences in the guidelines that all schools have for Curriculum for Excellence.

Level	Stage
Early	The pre-school years and Primary 1 or later for some.
First	To the end of Primary 4, but earlier or later for some.
Second	To the end of Primary 7, but earlier or later for some.

Challenge and enjoyment Children and young people should find their learning challenging, engaging and motivating. The curriculum should encourage high aspirations and ambitions for all. At all stages, learners of all aptitudes and abilities should experience an appropriate level of challenge, to enable each individual to achieve his or her potential. They should be active in their learning and have opportunities to develop and demonstrate their creativity. There should be support to enable children and young people to sustain their best effort.

Breadth The curriculum should provide opportunity for learning within and beyond the classroom, in a variety of learning contexts. Learning through a wide range of well-designed activities will also offer relevance, coherence and breadth.

Progression Children and young people should experience continuous progression in their learning from 3 to 18 within a single curriculum framework provided by Curriculum for Excellence. Each stage should build upon prior knowledge and achievements and children should be able to progress at a rate, which meets their needs and aptitudes. Active learning will promote the development of logical and creative thinking and encourage a problem-solving approach.

Depth The encouragement of depth of learning challenges us to think beyond the notion of progression as moving quickly from one topic or level to the next. The time spent on discussion of learning, explaining it to others, applying what has been learned in different contexts, spending time to probe and research a particular issue adds depth to learning. There should be opportunities for children to develop their full capacity for different types of thinking and learning, applying increasing intellectual rigour and exploring and achieving more advanced levels of understanding.

Personalisation and choice The curriculum should respond to individual needs and support particular aptitudes and talents. It should give each child and young person increasing opportunities for exercising responsible personal choice as they move through their school career. Approaches, which involve children in planning and respond flexibly to their interests and needs also contribute to personalisation and choice.

Coherence Taken as a whole, children and young people's learning activities should combine to form a coherent experience. There should be clear links between the different aspects of children and young people's learning, including opportunities for extended activities, which draw different strands of learning together. Activities planned in this way and which build on what is familiar, should enable children to make connections, give coherence to their learning and enable them to understand the relevance of what they are learning.

Relevance Children and young people should understand the purposes of their activities. They should see the value of what they are learning and its relevance to their lives, present and future.

The Curricular Areas

Literacy & English

Literacy includes reading, writing, listening and talking. As well as being a main focus area, Literacy and English skills are also developed across all other learning areas.

A modern language is also taught, which in Muiredge, is French.

Reading



In the early stages, our aim is to teach children to read. We achieve this through the use of banded reading books. This approach aids the children towards independence in four areas; decoding the printed word, this also includes the teaching of phonics, understanding of reading, gaining information through reading and enjoyment of reading. As children move from learning to read to reading to learn, children's novels, class texts and non-fiction texts are used to develop a range of skills. Throughout all stages Higher Order Reading Skills are being developed through different types of questioning and tasks. Children will also carry out book studies to develop critical and analytical skills and encourage discussion about different types of literature. Accelerated Reader has been introduced recently for P4-7 children. This online tool allows learners to develop reading comprehension skills.

Writing



In Muiredge we provide a range of opportunities to develop children's writing skills. Imaginative writing tasks take the form of stories, poems and scripts and non-fiction writing includes giving personal accounts, writing reports, explaining how things work, writing instructions and being persuasive. Throughout the different writing styles, pupils' 'tools for writing' skills are developed through VCOP. This approach looks at

Vocabulary, **C**onnectives, **O**peners, and **P**unctuation.

Ongoing assessment of pupils' writing skills is through 'formative assessment'. By sharing criteria, modelling good examples, providing feedback and giving pupils the opportunity to comment on their own and each other's work, children are helped to develop their writing skills. Children's progress in writing is assessed against the Scottish Criterion Scale for writing.

Listening & Talking



We are currently developing our Listening & Talking curriculum and are focussing on linking the skills to all areas of Literacy. Staff are participating in development opportunities to enhance their own professional knowledge of the teaching of Listening & Talking.

Pupils develop listening and talking skills as they work together co-operatively and through our active learning approach, across all areas of the curriculum.

French



Muiredge Primary and the other associated primaries for Uddingston Grammar School teach French. In Muiredge Primary, pupils in Primaries 5, 6 and 7 learn French. As part of the government's 1+2 programme, French is being spoken and developed from Primary 1, on a rolling programme. The teaching of French involves the four areas of language: listening, talking, reading and writing. There is a focus on a more active approach with games and songs being a part of this.

Mathematics and Numeracy



We aim to link mathematics to real life, by making children aware of the different uses of mathematics and numeracy by providing meaningful contexts in which they can use what they have learned. Number, money and measurement as well as information handling all contain the numeracy component. Shape position and movement form the maths component of Mathematics.

Within mathematics and numeracy, we have many aims for our pupils, such as being able to tackle practical problems, to work with one another, to use information appropriately and to acquire knowledge and understanding of the many mathematical processes.

We use an active learning approach in maths and numeracy involving careful questioning, which encourages pupils to think deeply and explain the thinking behind their results. Through this process children are enabled to build up mathematical language, knowledge and skills.

Social Studies



Social Studies bring together the main ways in which pupils learn about the world. In the course of their exploration in Social Studies, pupils will encounter aspects of a range of subjects. These not only include maths and language skills, but the development of skills in science, history and geography, technology, health education and expressive arts.

Within various topics our pupils learn about themselves, their community and the wider world and universe. Social Studies is a practical subject and involves the children regularly going on field trips, visiting places of interest and surveying the community.



Our curriculum enables our pupils to develop an understanding of various concepts; how things change, how some things happen as a consequence of others and why an understanding of time is important. They also find out about their own heritage, other places and other people throughout the world.

Children use and develop reference skills and use and develop their ability to read and process information. They will apply their reading, writing, listening and talking skills to prepare for, carry out and review and report aspects of their study. Often pupils will work collaboratively on tasks.

A very important aspect of this is helping children to develop informed attitudes about the world in which they live and how to care for it.

We continually encourage children to bin their litter; we encourage recycling and reduction of waste; we encourage the conserving of energy; we teach our pupils to respect all living things; we promote healthy living by encouraging children to take regular exercise and eat healthily. These topics are developed through our Eco School and Health Promoting School programme.

Science/STEM



Through learning in the sciences, children and young people develop their interest in, and understanding of, the living, material and physical world. They engage in a wide range of collaborative investigative tasks, which allows them to develop important skills to become creative, inventive and enterprising adults in a world where the skills and knowledge of the sciences are needed across all sectors of the economy.

The science curriculum includes investigations in the following areas:

- Planet Earth
- Forces, electricity and waves
- Biological systems
- Materials
- Topical science



In Muiredge, the science curriculum is being developed through a discrete programme of study. Children also get the opportunity to carry out investigations and experience some aspects of science through interdisciplinary topics, where science occurs as a natural link.

ICT/Technologies

Children are taught ICT skills from nursery through to P7. Initially skills are taught through particular programmes of work and are then developed through other curricular areas.

ICT is used to enhance the curriculum and we make use of a range of software and media technology, aimed to motivate, support and challenge pupils through all learning areas. All classes have a C-Touch, which enhances learning in the classroom.



Expressive Arts



This area of the curriculum includes Drama, Art and Music.

Muiresedge has a choir for pupils from Primary 6/7, which is run by our specialist music teacher, Graeme Barclay (Beat Buddies). We also have a P1-3 choir who rehearse weekly at playtimes and a P4/5 choir after school club.

If children show an interest or special aptitude we can offer some music tuition, provided by specialist tutors. At present our instrumental tuition includes violin, cello, double bass and

woodwind.



Our pupils demonstrate their confidence as individuals and success as learners, through the many performances that occur throughout the year.

Art and design is taught throughout the school from P1 – P7. The results of this work can be seen around the school within our many displays. We value our pupils' art work. Children are provided with a range of opportunities and experiences to develop art skills. Through art and design, pupils also have opportunities to be creative and to experience inspiration and enjoyment. They can explore a wide range of two- and three-dimensional media and technologies through practical activities, and create, express, and communicate ideas.

Drama is also taught throughout the school and develops a range of skills which include language and movement, performance skills and working collaboratively.

Health and Wellbeing

We have an important role to play in promoting the health and wellbeing of children and young people and of all of those in the educational communities to which they belong.

Learning in health and wellbeing ensures that children and young people develop the knowledge and understanding, skills, capabilities and attributes which they need for mental, emotional, social and physical wellbeing now and in the future. Learning through health and wellbeing enables children and young people to:

- Make informed decisions in order to improve their mental, emotional, social and physical wellbeing
- Experience challenge and enjoyment
- Experience positive aspects of healthy living and activity for themselves
- Apply their mental, emotional, social and physical skills to pursue a healthy lifestyle
- Make a successful move to the next stage of education or work
- Establish a pattern of health and wellbeing which will be sustained into adult life, and which will help to promote the health and wellbeing of the next generation of Scottish children.

In Muiredge we aim to ensure that children feel happy, safe, respected included and supported in the school environment and that all staff are proactive in promoting positive behaviour in the classroom, playground and the wider school community. We encourage our pupils to be responsible for their own behaviour.



We aim to promote physical wellbeing through our Physical Education programme. Our PE programme of study includes a wide range of activities, which help to promote stamina, agility and physical wellbeing. We are fortunate to be supported in these by our Active School Co-ordinator Katy Reilly. Swimming tuition and cycling proficiency lessons are offered each year to P5 and P6 pupils respectively. Our pupils also benefit from coaching sessions in a variety of sporting activities.

Relationships, Sexual Health and Parenthood

As part of our Health and Wellbeing curriculum, all learners will participate in lessons covering 'Relationships, Sexual Health and Parenthood'.

At Muiredge Primary School, we aim to provide a safe environment for this necessary learning to take place to ensure learners are supported, receive the right information and are able to communicate their feelings.

Muiredge's RSHP teaching is designed to be progressively developed as an important part of our curriculum in a way that is suitable to the age of our learners. It is important that at each stage learners have opportunities to develop emotionally and to use their emotions and skills to guide positive behaviour and help them make sense of the world they live in.

A resource titled 'RHSP' is used across our local authority to support the delivery of this aspect of the curriculum in our school. All content is age and stage appropriate for learners, organised by Curriculum for Excellence Levels, from Early Level through to Senior Phase. Our teachers deliver lessons in a sensitive manner and will adapt lessons to suit the needs of all learners.

Inter Disciplinary Learning (IDL)

Pupils' skills and learning are developed through a range of interdisciplinary learning contexts. Interdisciplinary studies, based upon groupings of experiences and outcomes from within and across curriculum areas, can provide relevant, challenging and enjoyable learning experiences and stimulating contexts to meet the varied needs of pupils. We are currently developing our IDL studies and have been exploring using 'Quests' which allow learners to develop a wide range of Higher Order Thinking skills and apply these to a range of activities through the posing of a question rather than a specific topic.

Revisiting a concept or skill from different perspectives deepens understanding and can also make the curriculum more coherent and meaningful from the learner's point of view.

Interdisciplinary studies can also take advantage of opportunities to work with partners who are able to offer and support enriched learning experiences and opportunities for young people's wider involvement in society.



Spiritual, social, moral and cultural values (religious observance)

The policy in Muiredge is to hold weekly assemblies in which the pupils take an active part. Within the RME programme the children learn about life within the world religions of Christianity, Islam and Judaism.

Children make visits to the Mosque, the Synagogue and the Church to learn about different forms of worship.

Fiona McKibbin from Uddingston Old Parish is our local minister. Fiona visits the school regularly to take assemblies and she visits classes to support teachers in delivering some aspects of the RME programme. We also have links with Park Church in Uddingston.

**Rights of Parents/Carers**

Scottish Government Ministers consider that religious observance complements religious education and is an important contribution to pupils' development. It should also have a role in promoting the ethos of a school by bringing pupils together and creating a sense of community. There is a statutory provision for parents to withdraw children from participation in religious observance. This right of parents' wishes will be respected. Where a child is withdrawn from religious observance, schools will make suitable arrangements for the child to participate in a worthwhile alternative activity.

Equalities

Integral to this guidance is the principle of mutual respect. The diversity of belief and tradition provides an ideal context in which pupils can learn about, and so learn from, what is important in the lives of themselves and others. South Lanarkshire's guidance recognises and welcomes diversity and promotes respectful understanding.

Parents may request that their children be permitted to be absent in order to celebrate recognised religious events. Advance notice should be provided to the school when children will be absent. Appropriate requests will be granted and the pupil noted as an authorised absentee in the register.

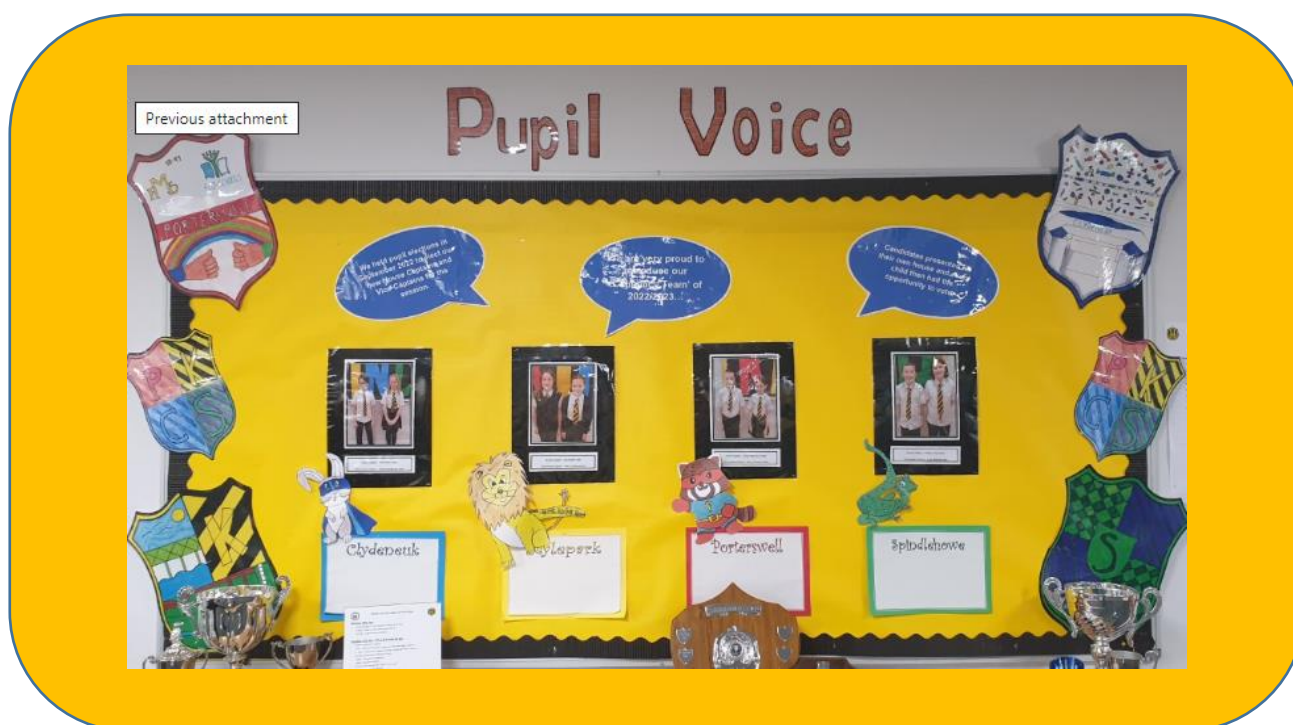
Pupil Leadership

Our pupils are encouraged to take part in a range of opportunities where they can develop leadership skills:

House Captains/Vice Captains: We have Captains and Vice-Captains for each of our four houses

- Clydeneuk- blue
- Kylepark - yellow
- Porterswell - red
- Spindlehowe - green

School Houses



Pupil Leadership Groups

All of our learners are in Pupil Leadership Groups which meet once a month. Classes mix and there are representatives from across all levels in each group. Groups are led by children, with Chairperson, Vice Chairperson and other roles being elected at the beginning of each term. Groups are supported by class teachers. Examples of leadership groups this year are; Stem Leaders, French Leaders, Community Links Leaders and World of Work Leaders. This is a great opportunity for all learners in our school to share their opinions and have a say.

Section 8: Assessment, Tracking & Progress

We want to share with you on how your child's learning is progressing. We do this through ongoing formative assessment in class as well as assessments used throughout the year to ensure progress in learning. Children and parents are introduced to assessment through our pre-entry programme. By assessing the stage of development of your child, we are able to 'tailor' the curriculum to suit the needs of individuals. Thereafter assessment plays an integral part of teaching and learning and will continue throughout your child's school career.

As learners move through the curriculum, they will experience a range of approaches to assessment. Assessment is not just about tests, levels and grades. Formative assessment allows teachers, on a daily basis, to help your children to develop their learning and skills. It allows class teachers to ascertain children's understanding, knowledge and skills and consequently formulate what the next steps in learning should be. Assessment is part of teachers' planning and is measured against the Experiences and Outcomes of Curriculum for Excellence at Early, First and Second levels. The process of planning, assessing, recording and recognising achievements can help learners to understand the skills and attributes they have developed through their planned learning and enable them to build on these.

Learners should be engaged in all aspects of assessment processes and be afforded an element of choice and personalisation in showing that they have achieved the intended outcomes.

Learners' progress is tracked through pupils achieving successes within the Learning Criteria of each curricular area.

This is an ongoing process but with additional summative assessments of class work at particular times of year.

Evidence folders are kept to show examples of pupils' work that attain set learning criterion within and across levels. Pupils will regularly talk about their learning and a profile of pupil progress will be built up over a period of time.

Children in P1, P4, P7 complete online Scottish National Standardised Assessments (SNSA) in literacy and numeracy each year. The assessments help to identify children's progress, providing diagnostic information to support teachers' professional judgement. The assessments are as inclusive as possible to accommodate the needs of children and young people who require additional support. There is no pass or fail and children and young people do not have to revise or prepare for these assessments.

We communicate regularly about children's learning using our Learning Lowdown approach which is a weekly slide show uploaded to Google Classroom. The Learning Lowdown showcases learning using pictures and video clips, it also has a home link section with discussion prompts and home learning opportunities.



Section 9: Reporting

Reporting will be ongoing and comprise of a range of activities which can include children presenting their learning, newsletters and ongoing oral discussions.

Our 'learner reports' will help you get to know more about the curriculum which each child follows and will describe their strengths, achievements and areas for development so you know what encouragement and support you can give. In addition, there will be parents' meetings which offer you the opportunity to discuss how your child is progressing.



We welcome any comments or additional information from parents to help us provide the best possible education for your child. In Muiredge, aspects of children's learning will also be reported through the school website, school app, showcased through class assemblies and our Twitter feed, so please follow us!



Section 10: Enrolment and transitions

Enrolment – how to register your child for school.

To register your child for school you should complete our online registration form. This can be done using the South Lanarkshire website.

www.southlanarkshire.gov.uk/info/200186/primary_school_information/392/enrolling_your_child_for_school

If you have any difficulty in identifying your catchment school, please email Edsuppserv.help@southlanarkshire.gov.uk

The online registration form will ask you to provide each child's full birth certificate and two pieces of recent official documentation both containing your permanent home address for example a utility bill, council tax statement, housing rent card, child benefit documentation.

Proof of where the child lives may also be needed. If your child is due to start school in August 2024, you can enrol online from Monday 8 January 2024. Your catchment school will contact you between Monday 15 to Friday 19 January 2024 to confirm your enrolment.

If your child attends the nursery of your catchment school, please do not assume that they will automatically be transferred. You must register them as normal at the school that is in the catchment area for your home address

If parents want their child to go to another school, they must enrol in the first instance with their catchment school and intimate that they wish to make a placing request. An online placing request form is available from the SLC website – www.southlanarkshire.gov.uk or by contacting edsuppserv.help@southlanarkshire.gov.uk or phone **0303 123 1023**.

Change of School/Placing Request

Normally children attend the school in their catchment area. However, there are times when parents may wish their children to go to other schools. If you wish your child to go to another school, then you may make what is known as a 'placing request'. If you live in South Lanarkshire and decide to submit a 'placing request', we are unable to reserve a place in your catchment school until the Council have made a decision on the 'placing request'. Please note if your 'placing request' application is unsuccessful and all places at your catchment school are filled you will be offered a place at the next nearest appropriate South Lanarkshire School.



Please note that if an application for a 'placing request' is successful then school transport is not provided.

If you move outwith your catchment primary school a 'request to remain form' must be completed. If you move outwith your catchment primary, this may affect your right to transfer to the associated Secondary School. Please note the secondary school is determined by the pupil's permanent home address and chosen denomination. If you require further information, please contact Education Support Services on edsupportserv.help@southlanarkshire.gov.uk or **0303 123 1023**.

Transition from primary to secondary school

Pupils normally transfer from primary to secondary school between the ages of 11½ and 12½, so that they will have the opportunity to complete at least 4 years of secondary education. Arrangements are made by the school to transfer children to the associated secondary school as determined by their home address. Parents of P7 children will be informed of the transfer arrangements made for their child to attend secondary school.

We will also provide you with information at this time on events designed to support P7 children before they move on to secondary school.

Section 11: Support for pupils (Additional Support Needs)**Getting it right for every child.**

Getting it right for every child (GIRFEC) supports families by making sure children and young people can receive the right help, at the right time, from the right people. The aim is to help them to grow up feeling loved, safe, and respected so that they can realise their full potential.

Most children and young people get all the help and support they need from their parent(s), wider family, and community but sometimes, perhaps unexpectedly, they may need a bit of extra help. GIRFEC is a way for families to work in partnership with people who can support them, such as teachers.

If you have any concerns about your child's wellbeing, you can speak to the named person who will work with you to provide support and decide how to move forward. Your school will let you know who this is. It is likely to be the Head Teacher in a primary school and a principal teacher (pupil support) in Secondary.

More information can be found on:

www.scotland.gov.uk/gettingitright

Support for All (Additional Support Needs)

The range of additional support for learning catered for, and the specialist services provided along with details on unit(s) and/or class(es) that the school offers.

The number of pupils who have a co-ordinated support plan should be shown. (Where the number of pupils who have a co-ordinated support plan is between 1-4 inclusive, it should not be published in the school handbook).

South Lanarkshire Education Resources have published a series of leaflets available which cover information for parents and carers about the Additional Support for Learning Acts.

Enquire is funded by the Scottish Government to provide information on the framework for supporting children who require additional support for learning and to encourage positive partnerships between families, schools, and local authorities to ensure children get the right support.

Enquire – the Scottish advice service for additional support for learning

Enquire offers independent, confidential advice and information on additional support for learning through:

- Helpline: 0345 123 2303
- Address: Enquire, Children in Scotland, Rosebery House, 9 Haymarket Terrace, Edinburgh, EH12 5EZ
- Email Enquiry service: info@enquire.org.uk

Advice and information is also available at www.enquire.org.uk. Enquire provides a range of clear and easy-to-read guides and fact sheets including the parents' guide to additional support for learning. If you would like to order our leaflets, postcards or guides to share with parents and carers of pupils in your school, please contact us on info@enquire.org.uk

Attachment Strategy for Education Resources

Attachment – what we do to support children and young people

South Lanarkshire Council Education Resources is committed to improving outcomes for children and young people by creating emotionally supportive learning experiences in our nurseries and schools.

The Education Resources Attachment Strategy supports the action in the 'Getting it Right for Every Child in South Lanarkshire's Children Services Plan 2021-23', following the launch of the Attachment Strategy in 2020, to provide staff training in Attachment and Trauma based practice.

What does it set out to do?

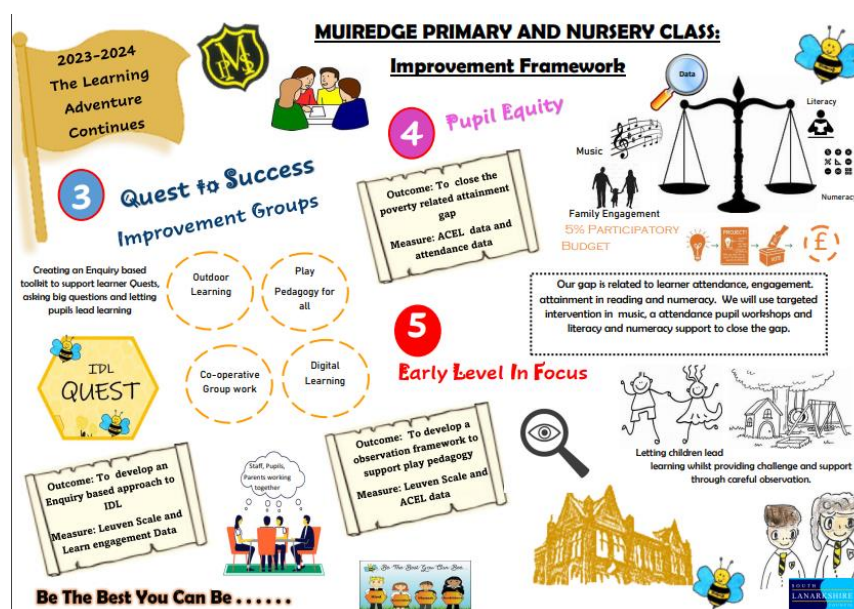
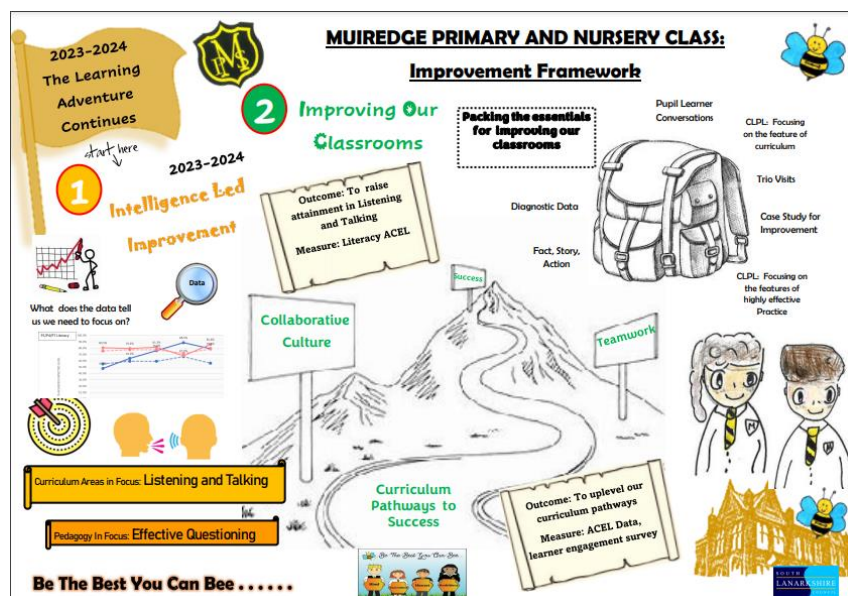
The aim of the strategy is to promote better experiences of attachment for South Lanarkshire's children and young people and to ensure that all education practitioners understand the importance of attachment theory and its application and how positive relationships can make a difference to outcomes.

How can I find out more?

South Lanarkshire Council Education Resources have published a series of leaflets and posters for establishments and for parents/carers which aim to share information on attachment theory and on how this informs the ways in which we support children and young people. These are available in schools and on the SLC Staff Learning Centre Sway accessible by teachers and staff.

Section 12: School Improvement

In Muiredge Primary we are proud of our achievements in terms of school improvement and continue to strive to raise attainment and improve outcomes for learners. We are doing this through our School Improvement Plan set out below –



For further clarification and detail of how we intend to make these improvements, please refer to the school's Standard and Quality Report and School Improvement Plan (image above) which can be accessed on the school website.



MUIREDGE PRIMARY & NURSERY CLASS

We are also committed to reducing the poverty related attainment gap and utilise our Pupil Equity funding to ensure equality in learning opportunities for our children such as 'Beat Buddies' and Barnardo's Family Support Worker.

Section 13: School Policies

School/Nursery Meals**Nursery class**

All children attending a local authority nursery will be provided with a free lunch. In addition, if your child attends long mornings or afternoons e.g., over 4 hours 30 minutes they will be provided with a 'brunch' or 'afternoon tea'. Nursery lunches and snacks are based on nutritional requirements from the NHS "Setting the Table" guidance. Nursery age children will also receive milk and a healthy snack free of charge under the Milk and Healthy Snack scheme 2021. This will be provided by the establishment.

Primary pupils

Healthy eating is something that the school supports, and a range of meals are available at lunchtime that meet the Nutritional Requirements for Food and Drink in Schools (Scotland) Regulations 2020

For their lunch each day pupils have the option to choose from two hot meal options plus a snack option. These are all served with vegetables or side salad. All meals also come with fresh chilled drinking water, salad, seasonal fruit and depending on the day - soup or a dessert. Milk will be available for those pupils entitled to free school meals through the free school meal eligibility scheme at morning break or lunchtime.

Pupils in:

Primary 1 - 5 receive a free school lunch.

Primary 6 - 7 meal cost is £2.05.

School lunches and milk can be paid for through your Parentpay account or Paypoint facilities in local shops.

NB School Meal prices are reviewed annually and may be subject to change

Adapted diets

If your child within Nursery, Primary or Secondary requires an adapted diet for medical reasons please speak to the school/nursery office who will provide the request form for you to complete. In addition, if you have a halal or vegan diet request for your child, please speak to the school office who will provide you with a request form.

Free School Meals

Children of parents who receive the following benefits are entitled to a free lunchtime meal for their child:

Income Support, Universal Credit (where your take home pay is less than £726 per month), Job Seeker's Allowance (income based), Employment and Support Allowance (income related), Working Tax Credit and Child Tax Credit (where your gross annual income does not exceed £8,717 as assessed by the HM Revenues and Customs), Child Tax Credit Only (where your gross annual income does not exceed £18,725 as assessed by the HM Revenues and Customs) or receive support under Part VI of the Immigration and Asylum Act 1999.

If you are in receipt of Housing Benefit and/or Council Tax Reduction from us there is no need for you to apply online, we will use the information we hold to automatically award free school meals (P6 to S6) and/or school clothing grants (P1 to S6) to eligible families.

We would encourage parents of children who are in receipt of any of the above benefits to take up this opportunity of having a meal provided for their child when they are at school. Arrangements are in place so that children who receive free meals are not singled out and we encourage all children to remain in school at lunch time.

Breakfast club runs daily from 8.15am and there is no charge for this.

School uniform

We ask all parents/carers to support the school by encouraging your child(ren) to adhere to the agreed dress code and the wearing of our school uniform. The wearing of a school uniform helps promote the identity of the school in the local community and helps create an ethos of sharing and pride in the school.

In addition, the wearing of a uniform helps towards increasing the protection of all pupils. The wearing of a uniform helps staff and the pupils to distinguish between who belongs to the school and those who may be visitors. This enables staff to approach and identify visitors more readily and helps in trying to offer a safer environment for pupils and teachers alike.

Equality of opportunity is an important aspect of the life of the school. Any proposals on the dress code and on what constitutes the school uniform will be the subject of discussion with the Parent Council and where appropriate consultation with parents, pupils and staff.

There are forms of dress which are unacceptable in all schools such as:

- the wearing of football colours
- clothing with slogans that may cause offence (anti-religious, symbolism or political slogans)
- clothing which advertises alcohol, tobacco, or drugs
- clothing which can be deemed unsuitable in terms of health and safety grounds such as shell suits, combat style clothing, dangling earrings, loose fitting clothes particularly in practical classes.

- articles of clothing that could be deemed to inflict damage on other pupils or be used by others to do so.
- footwear that may damage flooring.

Our School Uniform is:

- White blouse/shirt and/or yellow polo shirt with/without school badge
- Black skirt/trousers/pinafore
- Black cardigan/sweater
- Yellow/Black School tie (available to purchase from the school office)
- Black Sweatshirt with/without school badge
- Black blazer with/without school badge
- **Indoor shoes must be worn** (gym shoes or clean indoor plain black trainers)



Our Gym Kit is:

- Yellow Polo with/without school badge
- Black joggers/shorts
- Gym shoes or similar footwear are essential for P.E.

Great care is taken to protect children's clothing in school, but accidents sometimes happen. Please provide an old overall or old shirt which can be left in school to be used for messy activities when needed.

Clothing with the Muiredge logo can be purchased from Scotcrest and myclothing.com however this is not a requirement.

Please mark all items of clothing, including footwear, with your child's name.

Allergies – We are a NUT FREE SCHOOL!

A significant number of children and young people in our schools will have allergies and it is important that parents keep the school fully informed on these matters.

Allergies can present in a variety of ways and can occur at any point in a person's life. Symptoms range from mild to severe. Children and young people known to have an allergy with moderate to severe symptoms will likely have a Health Care Plan drawn up by the NHS. This will detail symptoms and appropriate interventions.

It is vital that parents share this information with the school and continue to provide any updated information. Where symptoms are mild and a Health Care Plan is not in place, parents should still continue to liaise regularly with the school on any new triggers, medications and actions required.

In all cases, our employees need to know your child's symptoms, treatments and any actions required to help prevent exposure to the allergen and minimise the risk of allergic reactions. Employees in schools will receive training on allergies and will liaise with parents and NHS on any additional specialist training required.

In supporting children and young people with allergies, school employees will operate in accordance with South Lanarkshire Council's Safe Systems of Work / risk assessment and national guidance on the administration of medicines.

Support for parent/carers

Clothing grant

In certain circumstances the Council provides support to parents/carers for the purchase of school wear. This also now includes nursery children aged 3 and 4 years old.

Applications can be made online at www.southlanarkshire.gov.uk. If you are required to submit evidence of your Tax Credit income it is important that a copy of this evidence is attached to your online application. Should you require further information, or you are unable to submit an application online then please contact the helpline number **0303 123 1011** (option 5).

School hours/holiday dates

Start	9.00am
Interval	10.40am – 10.55am
Lunch	12.35 – 1.20pm
End	3.00pm
Breakfast Club	8.15 – 8.45am (every day)

School holiday dates and in-service dates are available from the website www.southlanarkshire.gov.uk

Transport

South Lanarkshire Council has a policy of providing school transport to primary pupils who live more than one mile by the recognised shortest walking route from their catchment school. This policy is more generous than the law requires. This means that the provision of transport

could be reviewed at any time. Parents who consider they are eligible should complete a form online www.southlanarkshire.gov.uk or contact **0303 123 1023**. These forms should be completed and returned before the end of March for those pupils starting the school in August to enable the appropriate arrangements to be made. Applications may be submitted at any time throughout the year and will be considered by Education Resources.

A privilege transport scheme is operated for mainstream school contracts where a pupil is not entitled to free school transport. Privilege transport will only be granted providing there is spare capacity on an existing school contract and will be from and to designated pick up and drop off points. Privilege transport will not be provided where a service bus is used on the school run. Any spare capacity will be allocated using agreed priorities. More information on school transport is available www.southlanarkshire.gov.uk/info/200188/secondary_school_information/545/school_transport or phone **0303 123 1023**.

Insurance for schools – pupils' personal effects

South Lanarkshire Council is concerned at the level of claims being received for loss or damage to pupils' clothing or personal effects. Parents are asked to note the Council's position in terms of insurance for pupils' personal effects:

Theft/loss of personal effects

The Council is not liable for the loss or theft of pupils' clothing or personal effects for example mobile phones, tablets etc. and any items are therefore brought into the school is done so at the pupil/parents' own risk.

Parents can assist by ensuring that valuable items and unnecessarily expensive items of clothing are not brought to school.

Teachers and other staff have been advised not to accept custody of any such items.

The same principle applies to musical instruments and other equipment used for activities within the school, which belong to the pupil, but are brought into the school. Parents should be aware that if such equipment is left in school, it is done at the pupil/parents' own risk.

In the case of valuable items such as musical instruments, parents should ensure that these items are covered by their own household insurance.

(ii) Damage to clothing

The Council is only liable for damage caused to pupils' clothing where the damage has resulted from the negligence of the Council or one of its employees. Claims arising otherwise will not be accepted by the Council's insurers.

Promoting positive behaviour

It is the responsibility of staff within the school to ensure that parent council members, parents and pupils are involved in the creation of a positive school ethos that encourages good behaviour. Equally, the school whilst trying to promote positive behaviour must support young people should incidents or bullying occur. Parents have a significant role to play in working with the school so that teachers, parents, and pupils know what is expected of them in trying to change the behaviour and attitudes that contribute to bullying behaviour.

Our approach is to create an environment where better behaviour will encourage better learning. The school, along with the support of parents, can work together to create a learning environment which young people can enjoy and feel safe.

Incidents of bullying should be reported to the school immediately so that each alleged incident can be looked at. Together we can work towards creating a safer school for children and staff.

In addition, a guideline (Promoting Positive Relationships and Behaviour) has been produced to support all teaching and support staff and inform them of their roles and responsibilities in respect of dealing with the small number of children and young people who display challenging behaviour. Early identification is crucial so that intervention can be provided to support children and young people to help them address their issues and concerns. Staff training is provided to help develop the skills needed to respond to and manage challenging behaviour. A wide range of appropriate staff development opportunities has been developed for this purpose.

Child Protection

All staff in educational establishments in South Lanarkshire Council receive an annual Child Protection update and are required to follow the advice and guidance contained within relevant Education Operating Procedures. They must also complete a mandatory Learn on Line Course "Child Protection in Education".

South Lanarkshire's children's services partnership works together to support children, young people, and their families so that children grow up in communities where they are safe, healthy, active, achieving, respected, responsible and included, and have the opportunity to achieve their full potential. They are committed to continuously improve our services to ensure children, young people and their families get the right support at the right time.



Sometimes children and young people need additional help to make sure that they are “*cared for and protected from abuse and harm in a safe environment in which their rights are respected*” (CPC South Lanarkshire Child Protection shared vision). The Child Protection Committee has the overarching responsibility to ensure that agencies individually and collectively work to protect children and young people as effectively as possible.

All staff have a responsibility to report any suspicions that a child has been abused or is at risk of harm, abuse, or neglect. Robust procedures and guidance are in place to support education staff to: -

- be alert to signs that a child may be experiencing risks to their wellbeing, report concerns to the head of establishment or the child protection coordinator without delay.

- be actively engaged in support and protection and development of wellbeing.

If you would like more information, or have a concern of a child protection nature, please contact the head of the educational establishment which your child attends.

The Child Protection Committee’s website has a range of useful information for parents/carers to help them keep their children safe.

www.childprotectionsouthlanarkshire.org.uk

Section 14: General Data Protection

General Data Protection Regulation as supplemented by the Data Protection Act 2018 (GDPR)

Information on pupils, parents and guardians is held by the school to enable the teaching, registration, and assessment of pupils as well as associated administrative duties. The information is stored and used as per the requirements of the GDPR, with South Lanarkshire Council defined as the data controller. The Council have established a data protection policy that applies to all of its school.

Education Resources has also prepared a privacy notice (below) which sets out how we will deal with personal information as part of our statutory function as an education authority. For more information, please contact the school.

Privacy Notice**Introduction**

In line with the General Data Protection Regulation (GDPR) we have produced this privacy notice to inform you how we deal with personal information as part of our statutory function as an education authority.

The Council has a legal obligation to deliver effective education services to children, young people, and adult learners in South Lanarkshire. In order to do this, we need to collect personal information about children, young people, and their families so that we can help them to learn and keep them safe.

Using your personal information

The Council is a “controller” of the personal information you provide when enrolling for a nursery or school, applying for an education service, or participating in groups or activities provided by Education Resources.

Information we collect from you about you and your child at enrolment.

When you enrol for a nursery or school, we ask for the following information:

parent/carers contact details (name, address, phone, email).

the child's name, date of birth, gender, and address.

information about medical conditions, additional support needs, religion, and ethnicity.

any information you may wish to provide about family circumstances.

Information we collect at other times.

We will also collect information at other times such as when you apply for a benefit, request a services or other support. We will provide an additional privacy notice at these times.

If you apply for an education service or benefit, such as school transport, free school meals, clothing grant, placing request or EMA, we will also ask for personal information as set out above. We will also ask for information about your income for education benefits applications.

If you make a request for additional support such as an educational psychologist or other support for learning, we will ask for more detailed information to allow us to provide the most appropriate support for your family. This may include information about family circumstances or medical conditions.

If there are concerns about your child's wellbeing and/or your child has needs that may require additional support, we will wish to work with you to collect and consider information to enable us to help you get the right support at the right time in line with the Getting it right for every child approach.

We require this information to ensure that children and young people are educated appropriately, supported, and that we take account of their health and wellbeing. We will also ask you to update this information annually and to tell us when there are changes to your details.

Information that we collect from other sources.

As an education authority and as part of our statutory function in accordance with our legal obligations, we receive information from other sources such as the SQA, the NHS or Social Work about you or your child, this includes:

exam results and assessment information.

information about health, wellbeing, or child protection.

Why do we need this information?

We need this information so the Council can ensure it is delivering education services appropriately to all learners:

for the education of children, young people and adult learners.

for teaching, enrolment, and assessment purposes and to monitor the educational progress of children, young people and adult learners;

to keep children and young people safe and provide guidance services in school;

to identify where additional support is needed to help children, young people and adult learners with their learning;

to maintain records of attendance, absence and behaviour of children and young people (including exclusions);

to support children and young people moving on each year from nursery to primary, primary to secondary and when they move or leave school;

to help us develop and improve education services provided for young people, adult learners, or families

In accordance with our legitimate interests as an education authority we will also use your information to create statistical reports.

We will share your information with:

As an education authority and as part of our statutory function in accordance with our legal obligations we will share information with other bodies or parts of the Council, including:

The Scottish Government and bodies such as Education Scotland, Scottish Qualifications Authority, Skills Development Scotland, and other organisations that support children and young people's learning.

Other parts of the Council when required for services such as school meals, school transport, education benefits and with Social work in connection with any child protection concerns we become aware of.

The NHS, to support health initiatives in accordance with the legal obligation on the Council in terms of section 39(3) of the National Health Service (Scotland) Act 1978.

South Lanarkshire Leisure and Culture Limited, where children and young people are participating in sports and leisure activities.

Other schools/local authorities – if a child moves or transfers to another school the Council has an obligation to pass on information with regards to pupil records to the new school/local authority.

You have the right to access your personal information as well as the rights of rectification, erasure, restriction, and the right to object. For information on these rights and how to exercise them or for information about how we manage your personal information, you can get a copy of our full privacy notice from our website:

(https://www.southlanarkshire.gov.uk/info/200235/meta/1730/general_privacy).

Our full privacy notice will also provide information on how to make a complaint or to request a paper copy of the privacy notice from the Data Protection Officer.

Appendix A

This annex gives a list of useful information and the links to the content is now available from the Council's website by accessing the following link

http://www.southlanarkshire.gov.uk/info/200186/primary_school_information/1264/curriculum_for_excellence/3

The list is not intended to be exhaustive, and authors may wish to consider additional sources of school, local and national information, material, and resources.

Contact Details

- Education Scotland's Communication Toolkit for engaging with parents.
- The Scottish Government Guide Principles of Inclusive Communications provides information on communications and a self-assessment tool for public authorities.
- Choosing a School: A Guide for Parents - information on choosing a school and the placing request system
- A guide for parents about school attendance explains parental responsibilities with regard to children's attendance at school.

Parental Involvement

- Guidance on the Scottish Schools (Parental Involvement) Act 2006 provides guidance on the act for education authorities, Parent Councils, and others.
- Parentzone provide information and resource for parents and Parent Councils
- National Parent Forum for Scotland; www.npfs.org.uk

School Ethos

- Supporting Learners - guidance on the identification, planning and provision of support
- Journey to Excellence - provides guidance and advice about culture and ethos.
- Health and wellbeing guidance on healthy living for local authorities and schools
- Building Curriculum for Excellence Through Positive Behaviour and Relationships outlines the Scottish Government's priority actions around positive behaviour in schools and is also a source of support.
- Scottish Catholic Education Service's resource 'This is Our Faith' which supports the teaching and learning of Catholic religious education.

Curriculum

- Information about how the curriculum is structured and curriculum planning.
- Information about the outcomes a learner can expect to experience and achieve across literacy, numeracy and health and wellbeing, as well as the 8 curricular areas.

- Advice, practice, and resources to support the experiences and outcomes on literary, numeracy and health and wellbeing.
- Broad General Education in the Secondary School – A Guide for Parents and Carers
- Information on the Senior Phase
- Information on Skills for learning, life, and work
- Information around the Scottish Government's 'Opportunities for All' programme
- Information for organisations responsible for the planning, management and delivery of career information, advice, and guidance services
- The Skills Development Scotland website 'My World of Work' offers a number of tools to support career planning.

Assessment and Reporting

- Building the Curriculum 5: a framework for assessment provides guidance around the assessment framework.
- Information about Curriculum for Excellence levels and how progress is assessed.
- Curriculum for Excellence factfile - Assessment and qualifications
- Information on recognising achievement, reporting, and profiling.
- The Scottish National Standardised Assessment- in Scotland, pupils in P1, P4, P7 and S3 complete online standardised assessments in literacy and numeracy as part of their everyday learning and teaching.

Transitions

- Curriculum for Excellence factfile - 3-18 Transitions - provides information on the transitions children and young people will face throughout their education and beyond.
- Career Information, Advice and Guidance in Scotland - A Framework for Service Redesign and Improvement provides guidance on career information, advice, and guidance strategy.
- Choices and changes provides information about choices made at various stages of learning.
- The Additional support for learning page provides links to relevant legislation and guidance, including the arrangements that should be in place to support pupils with additional support needs.
- Supporting Children's Learning Code of Practice includes specific requirements on education authorities and others under the new legislation in relation to transition.
- Enquire is the Scottish advice service for additional support for learning.
- Parenting Across Scotland offers support to children and families in Scotland.

Support for Pupils

- The Additional support for learning page provides links to relevant legislation and guidance, including the arrangements that should be in place to support pupils with additional support needs.
- Information about the universal entitlement to support that underpins Curriculum for Excellence



- Supporting Children's Learning Code of Practice (Revised edition) - provides Statutory guidance relating to the Education (Additional Support for Learning) (Scotland) Act 2004 as amended.
- Getting It Right For Every Child and Young Person, is essential reading for anyone involved or working with children and young people, including practitioners working in adult services with parents and carers.

School Improvement

- Scottish Schools Online - provides a range of school information, including contact details, school roll, facilities, website, inspection reports.
- Education Scotland's Inspection and review page provides information on the inspection process.
- Scottish Credit and Qualifications Framework (SCQF)
- Scottish Qualifications Authority provides information for teachers, parents, employers, and young people on qualifications.
- Amazing Things - information about youth awards in Scotland
- Information on how to access statistics relating to School Education

School Policies and Practical Information

National policies, information and guidance can be accessed: from the Scottish Government website on www.gov.scot with an update on school inspection outcomes being available via the Education Scotland website.